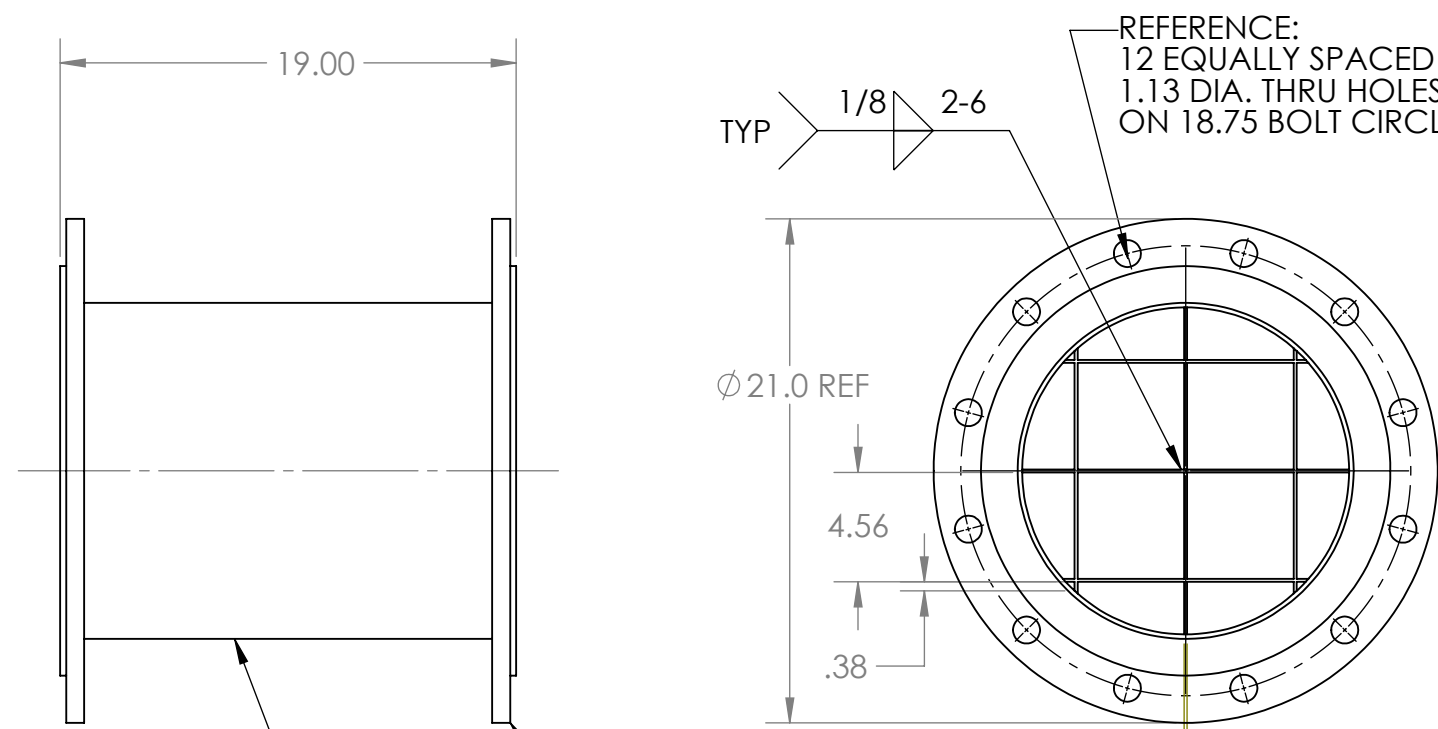


8 7 6 5 4 3 2 1

D
C
B
A



REFERENCE:
12 EQUALLY SPACED
1.13 DIA. THRU HOLES
ON 18.75 BOLT CIRCLE REF

TYP 1/8 2-6

Ø 21.0 REF

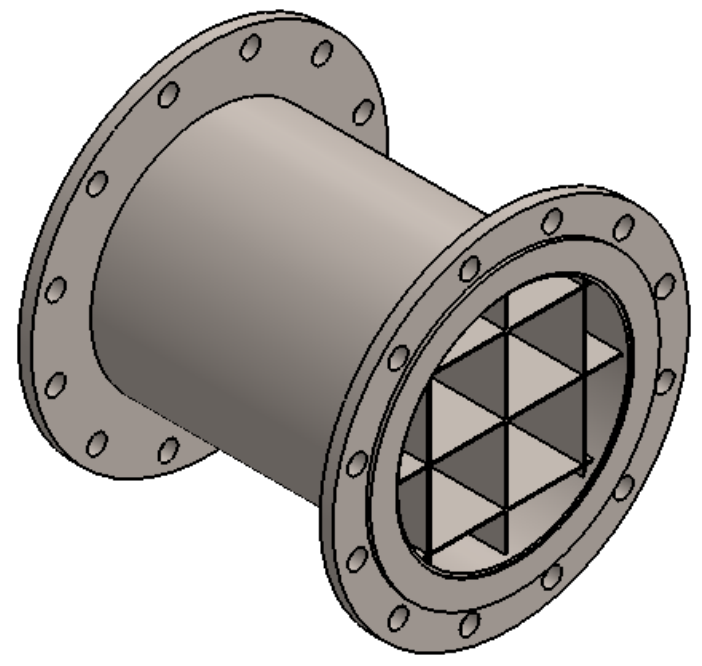
4.56

.38

.125 316 STAINLESS STEEL PLATE
X 18" LONG, GRID AS SHOWN

2 X 14" 150# FLAT FACED
VANSTONE FLANGES
316L STAINLESS STEEL FACE RINGS
WITH IRON BACKING RINGS

SCH 10S 316L PIPE
MANUFACTURED TO ASTM A778.
FINAL SPOOL COMPLIES TO ASTM A774



Notes:

- 1) Products are warranted to be free from defects in materials and workmanship upon delivery.
- 2) Since these flow straightening spools are being custom built to specific dimensions using material specifications provided by AECOM there is no guarantee of performance or reliability. Flow Optimizers shall not be held liable for any loss or damages resulting from the use of them. Flow optimizers is providing the assembly drawings as a visual representation of how the product will be made. Flow Optimizers is not providing fluid dynamics engineering, materials engineering, or fabrication engineering and is not offering any guarantee that these products will perform a particular function or meet any type of flow performance specifications or product service life. Flow Optimizers is only responsible for assembling the products as per AECOM's sketch and delivering them to the jobsite.
- 3) Grid is skip weld construction as shown.

PROPRIETARY AND CONFIDENTIAL
THE INFORMATION CONTAINED IN THIS DRAWING IS THE SOLE PROPERTY OF FLOW OPTIMIZERS LLC. ANY REPRODUCTION IN PART OR AS A WHOLE WITHOUT THE WRITTEN PERMISSION OF FLOW OPTIMIZERS LLC IS PROHIBITED.

		UNLESS OTHERWISE SPECIFIED:		NAME	DATE
		DIMENSIONS ARE IN INCHES		DRAWN	PMR
		TOLERANCES:		CHECKED	11/1/17
		FRACTIONAL ±		ENG APPR.	
		ANGULAR: MACH ± BEND ±		MFG APPR.	
		TWO PLACE DECIMAL ±		Q.A.	
		THREE PLACE DECIMAL ±		COMMENTS:	
		INTERPRET GEOMETRIC TOLERANCING PER:			
		MATERIAL			
		FINISH			
NEXT ASSY	USED ON				
APPLICATION		DO NOT SCALE DRAWING			

FLOW OPTIMIZERS LLC
310 DAVIS RD. DELRAY BEACH, FL 33445 USA

14" SPOOL WITH 18" FLOW STRAIGHTENING VANE

SIZE	DWG. NO.	REV
B	BFO-1004	D

SCALE: 1:8 WEIGHT: SHEET 1 OF 1

8 7 6 5 4 3 2 1