

Maxi-Joint®

Open Arch Expansion Joint

Style 1101



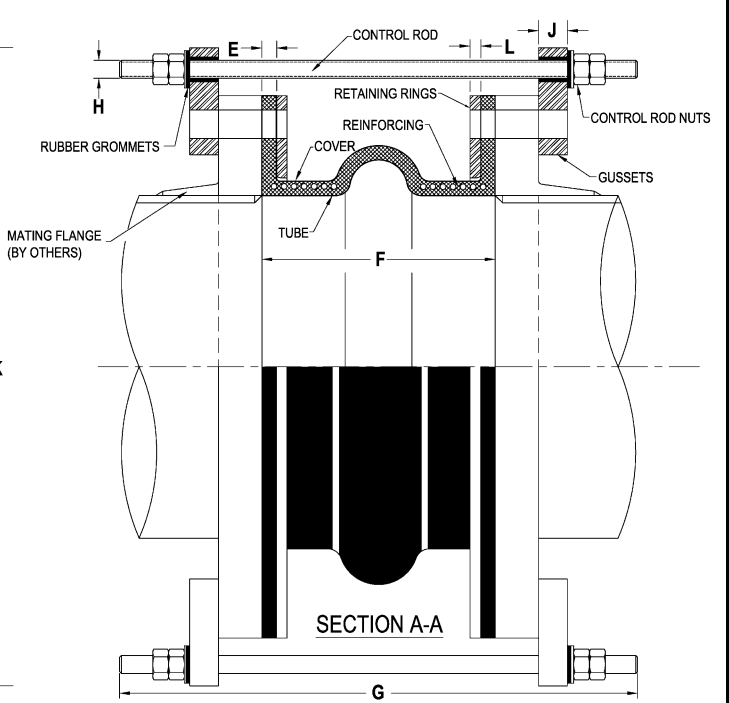
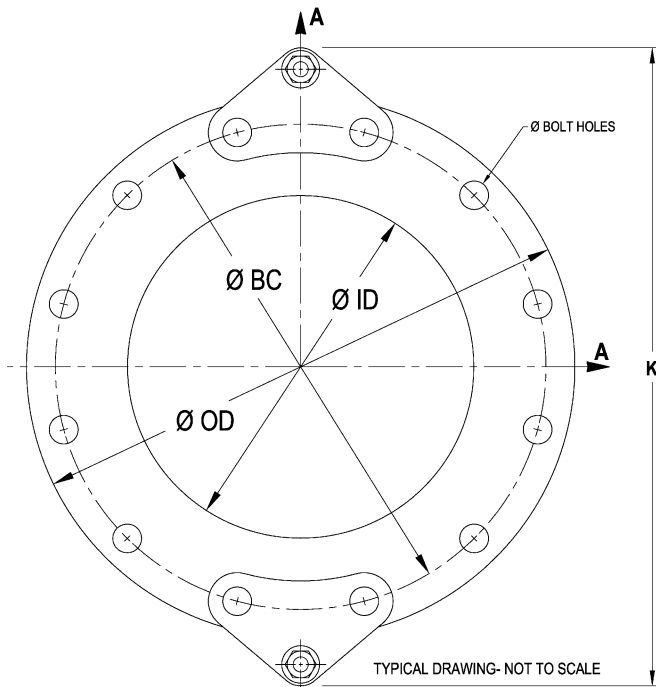
850 Washington Ave.
Carlstadt, NJ 07072
201.935.1900 Phone
201.935.1915 Fax
www.general-rubber.com

Customer:	
Project:	
PO/BID No:	
Job No:	
DATE:	DWG No.:

Submittal Data

Materials Of Construction

Tube	
Cover	
Fabric Reinforcement	
Metal Reinforcement	
Retaining Rings	
Control Rods	
Control Rod Nuts	
Gussets	
No. of Control Rods	



Dimensional Data

(All dimensions expressed in inches)

Item No.	Qty	Tag No.	Joint Size I.D.	Face To Face F	Flange Dia. O.D.	Bolt Circle B.C.	Holes		Movements			Pressure		Temp (°F)	E	H	J	G	K	L		
							No.	Dia.	Comp	Elong	Lateral	PSIG	Vac in Hg									
1	3																					
2	2																					
3	3																					

Notes: Rubber expansion joints must bolt up to a full flat face mating flange (by others) with no more than 1/16" of a raised face.
Standards and tolerances as per Non-Metallic Expansion Joint Division Handbook of the Fluid Sealing Association
For material of construction & dimensional data only. Prepared by: